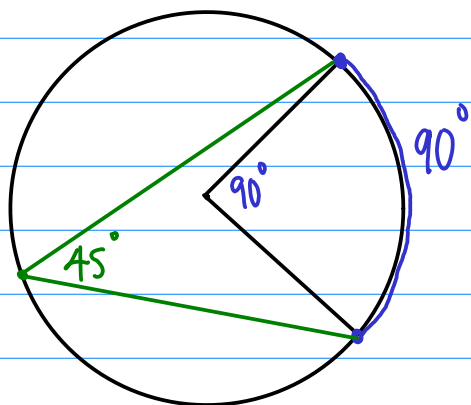
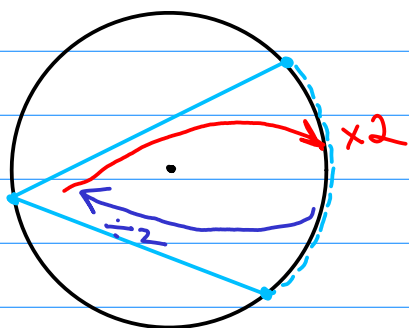


§6.3: Arcs & \angle 's

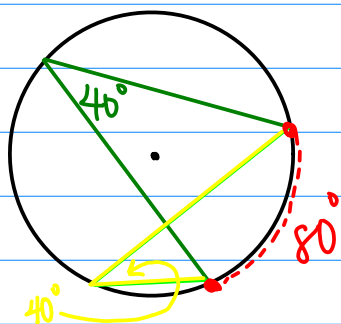


* Central \angle 's are \cong to the arcs they cut

* Inscribed \angle 's are $\frac{1}{2}$ the measure of the arcs they cut



• mult. by 2 to "escape" the \odot
 • divide by 2 to "enter" the \odot



• 2 inscribed \angle 's cutting the same arc are \cong .

• Inscribed \angle 's intercepting semicircles are rt. \angle 's.

