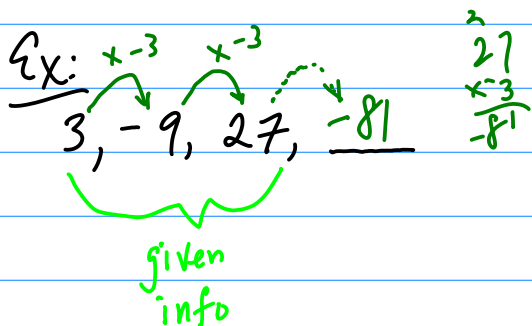
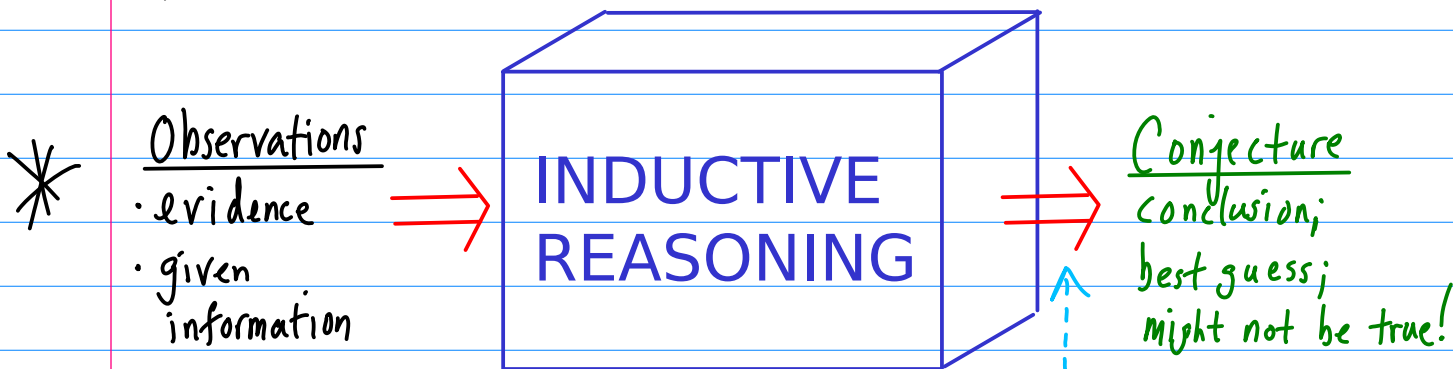


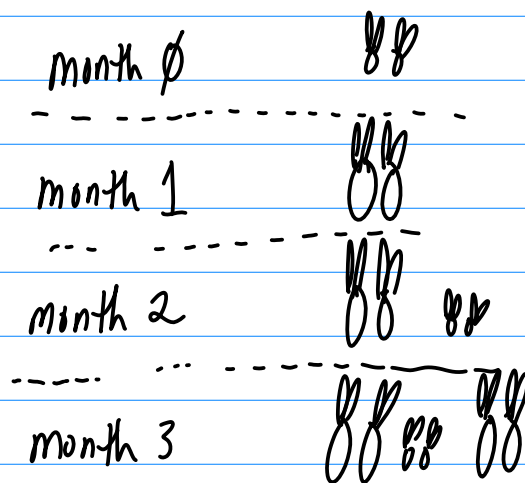
§ 2.1-2.2: Inductive Reasoning & Patterns



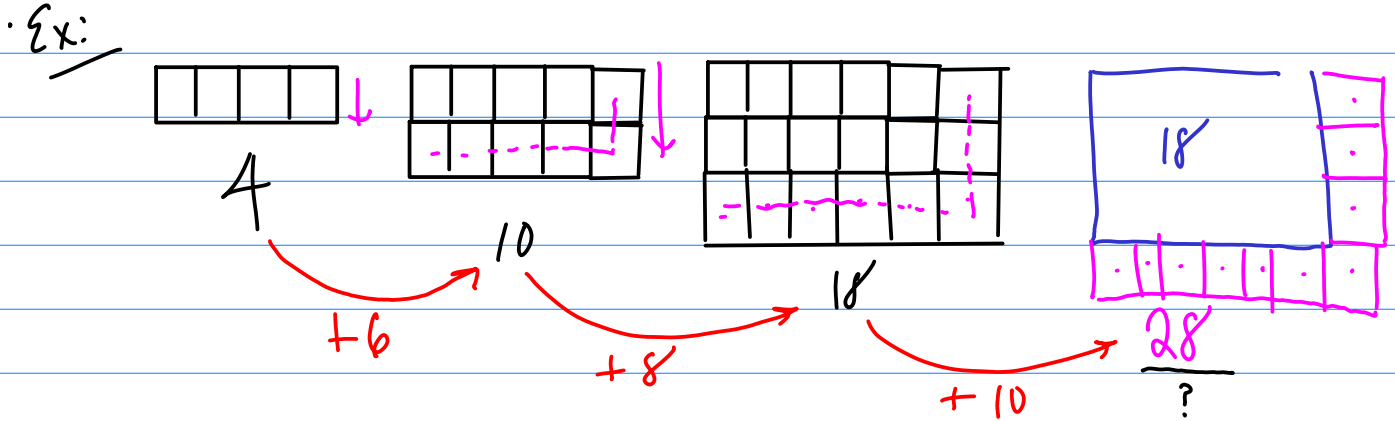
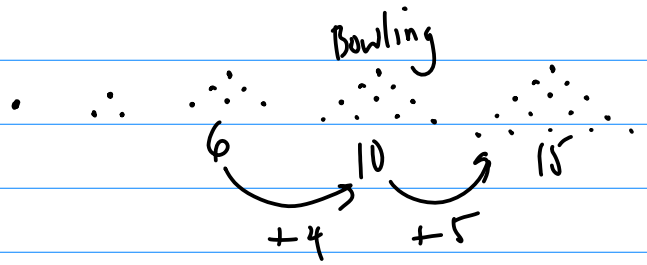
Conjecture: each element is -3 times prior element

Ex: Fibonacci Sequence

month	# of pairs
0	1
1	1
2	2
3	3
4	5
5	8
...	(Do Now)



* Triangular #'s
 $1, 3, 6, 10, 15$
 +2 +3 +4 +5



Sequences

Arithmetic (+/-)

Geometric (x/÷)

Ex:
 $3, 8, 13, 18$
 +5 +5 +5

Ex:
 $1024, 512, 256, 128$
 x2 x2
 ÷2 ÷2 ÷2

Ex:
 $-4, -7, -10, -13$
 -3 -3 -3

$$\frac{256}{2}$$